

EXELMNTX

SCALARED INNOVATIONS



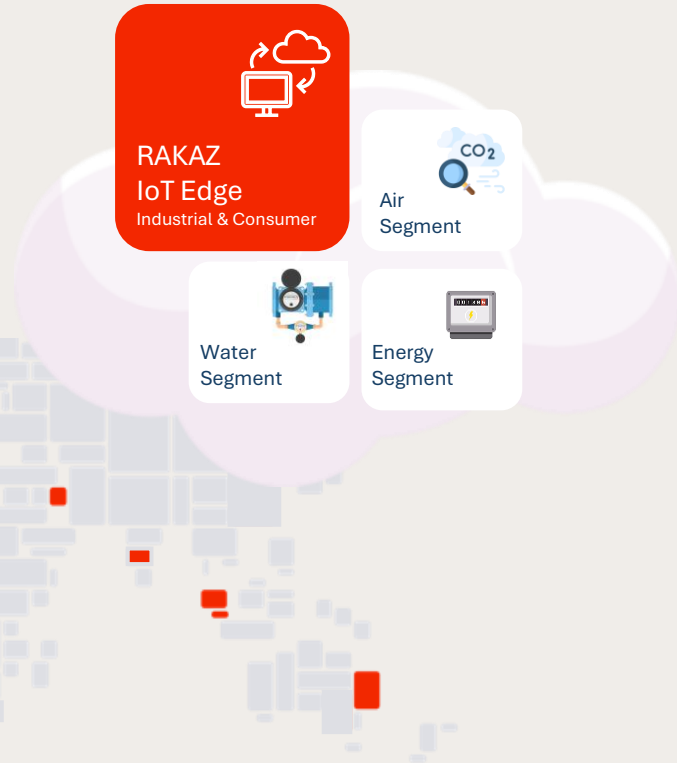
Transforming Businesses
SMART > SECURED > SUSTAINABLE

About ELMNTX

Established **2013** Over **50+** projects delivered globally

Experts in highly customized solutions **10+** Solutions

Collective experience of **20+** Years



Our Clients

5+
Countries

20+
Industries

120+
Subject Matter Experts



ELMNTX provides 360° view of the supply and distribution of water / wastewater system. Govt. officials can make informed decisions to ensure correct LPCD is provided with the required quality of water

Industries can ensure smooth operations with high efficiency and reduced downtime. No manual readings with auto-report generation and remote operation.

Customizable Dashboard

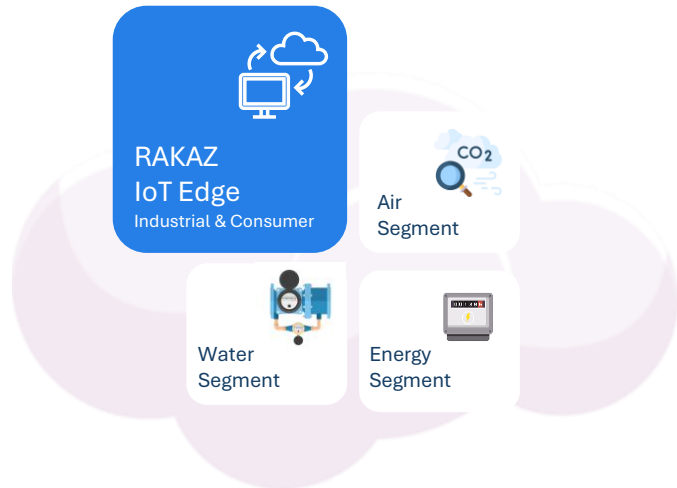
Key KPIs can be instantly analyzed via graphical and pictorial reports, depending on use cases.

Remote Operations

No manual intervention is required. The entire distribution can be viewed, operated, and managed remotely.

Real-time Alerts

Location-wise triggers can be identified and alerted.



ELMNTX – Water / Wastewater



Energy Audit & Analysis

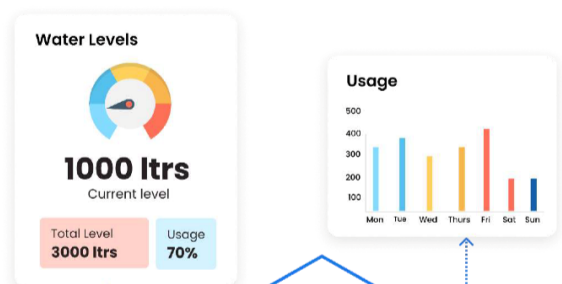
Monitor and audit inlet and outlet functioning of treatment plants - STP, WTP, & ETP.

Water Quality Monitoring

Measure pH, TDS, BOD, COD, Nitrate, Chlorine, etc., and trigger notifications instantly.

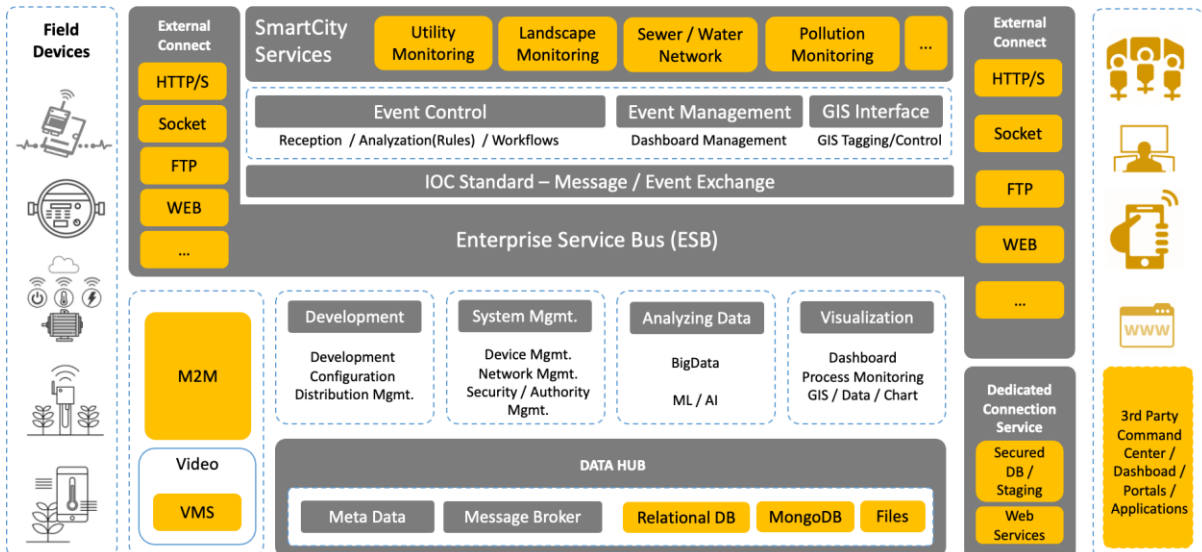
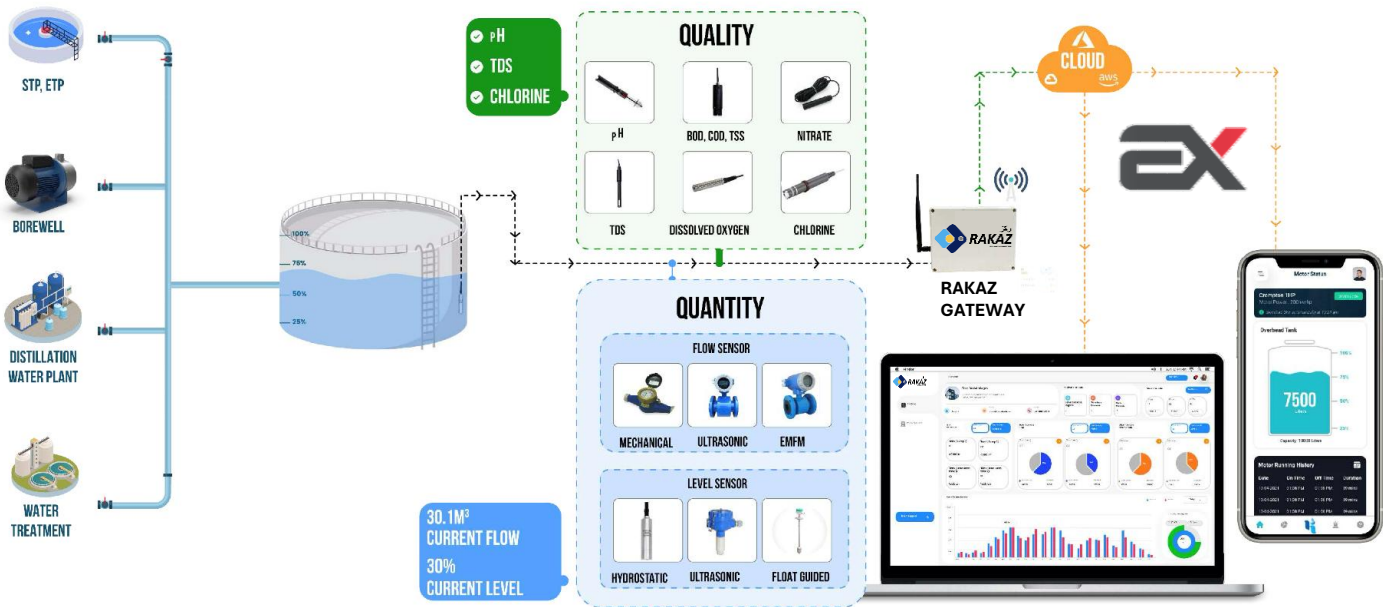
Increase Productivity

Reduce downtime due to failures and save operational expenses upto 30%.



Product Architecture

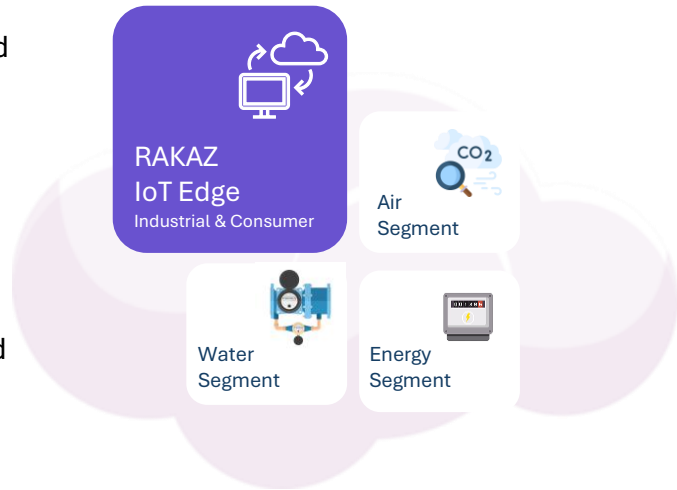
ELMNTX's solution is customized to resolve number of problems in various sectors, leveraged with curated dashboards as per specific users' requirements.



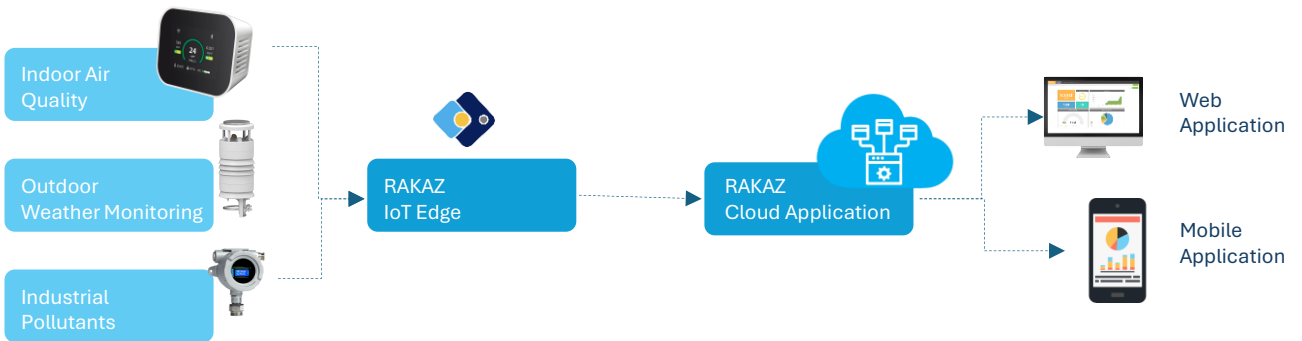
ELMNTX - Air

We are an industry leader in IoT enabled air quality and weather intelligence solutions tested around the world for accurate observations and proven performance.

A fully integrated station that can provide integrated air quality metrics like Air Quality Index (AQI) and Air Quality Health Index (AQHI), and monitor multiple pollutants and parameters simultaneously, including air quality sensors such as **NO, NO2, CO, O3, SO2, CO2, VOCs, H2S, PM (PM10, PM2.5, PM1)**, as well as temperature, relative humidity, and barometric pressure (with optional environmental sensors to capture data on wind speed and direction, ambient light and noise, and rainfall).



Product Portfolio

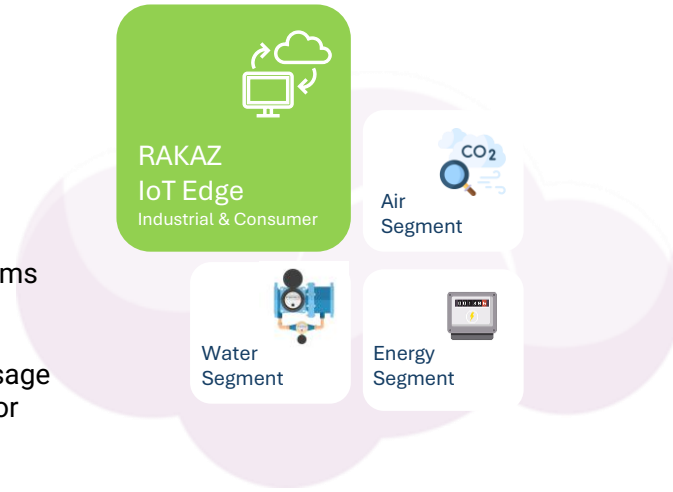


ELMNTX - Irrigation

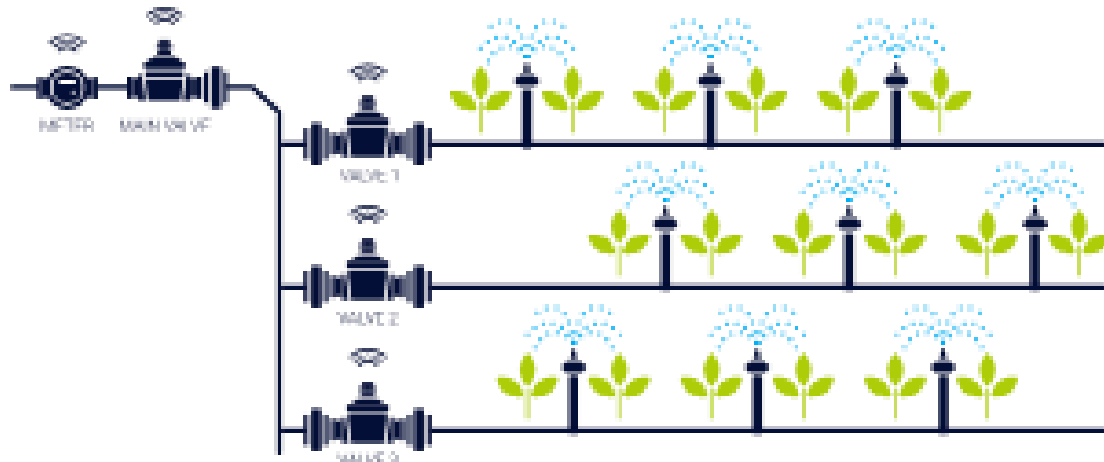
ELMNTX's IoT based Landscape / Irrigation Management Solutions

IoT enabled smart Landscape and Agriculture systems to irrigate, and it executes the irrigation decision without human intervention.

We understand the importance of reducing water usage in a time where it's no longer economically, legally, or socially sustainable to waste.



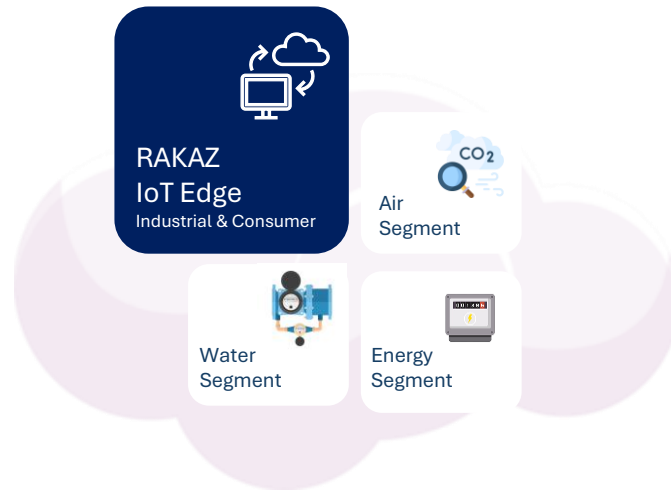
- Smart irrigation belongs to the precision agriculture farming management concept, whose goal is to increase field yield and reduce costs by using resources like water more sustainably and intelligently.
- Smart irrigation systems use moisture, temperature, and other sensors to collect real-time data about the weather, the soil, and the irrigation system directly on site.
- Smart irrigation has a lot of advantages that help you save money and reduce water waste:
- Saving costs for manual labour: valves, pumps, and sprinklers are automatically regulated and only need maintenance if an issue is detected



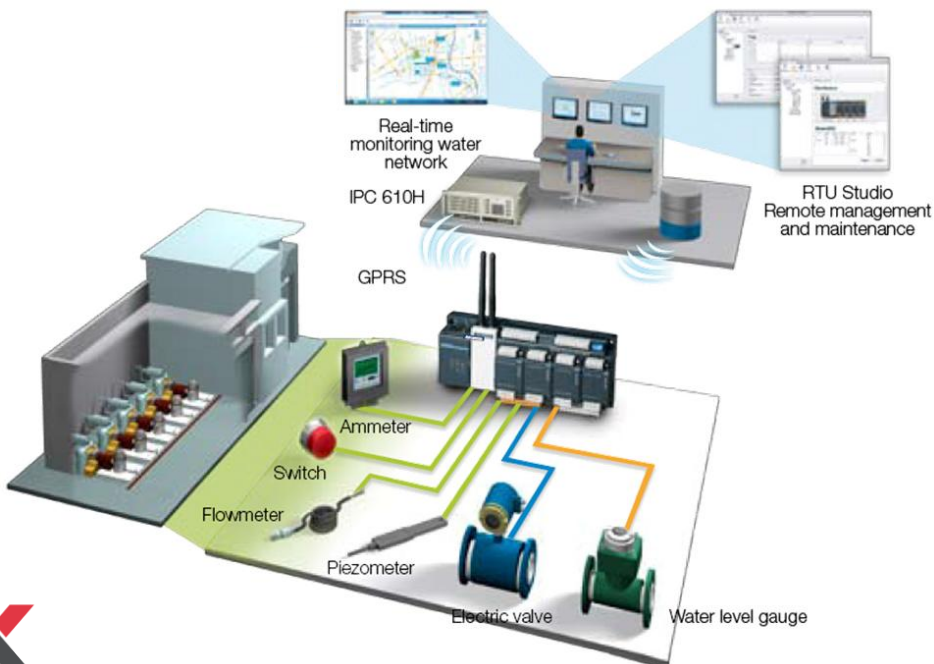
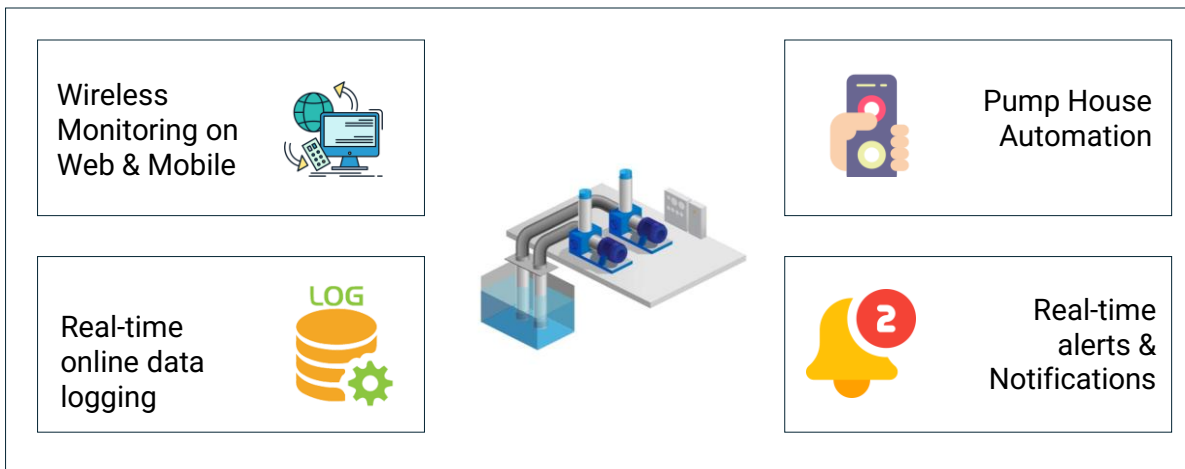
ELMNTX – Pumpstation Monitoring

ELMNTX's IoT based Smart Water grid / Pump station Remote Monitoring Solutions

The open system architecture of the ELMNTX remote communication system, the integrated I/O can be used to monitor the current, voltage & frequency and start/stop state of the pump, pressure and flow of inlet and outlet, water level, outlet water quality and inlet valve.



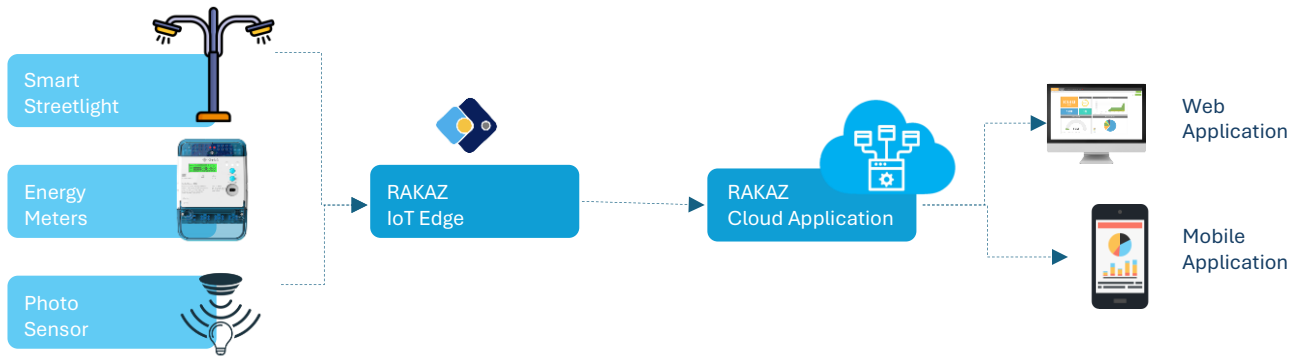
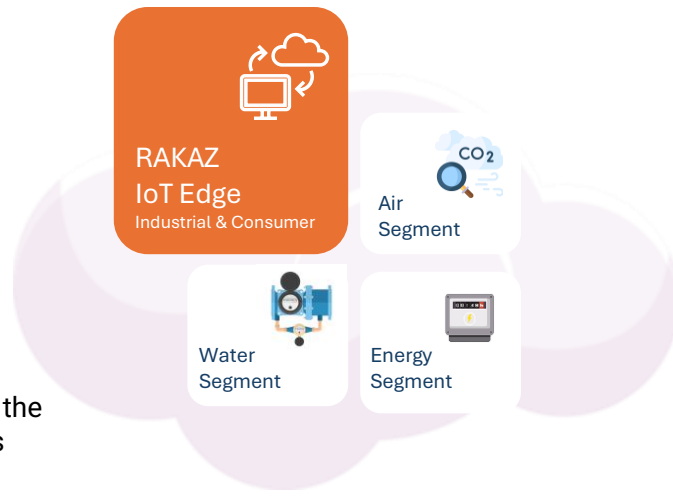
Solution features



ELMNTX - Lighting

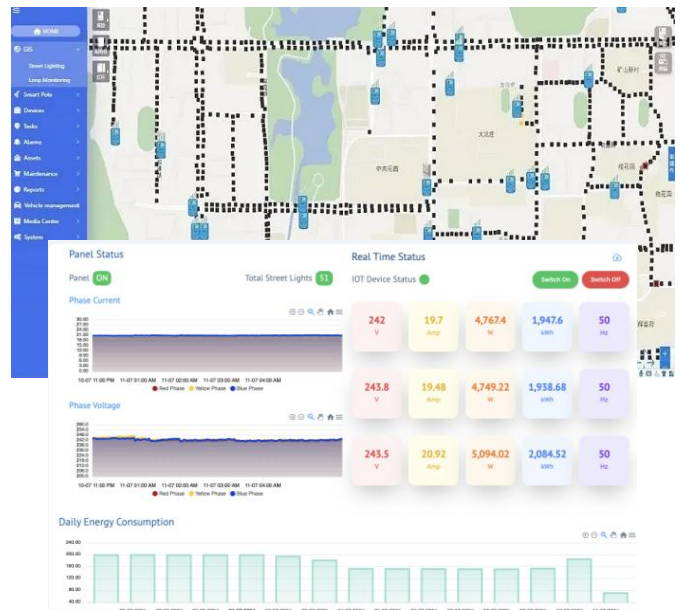
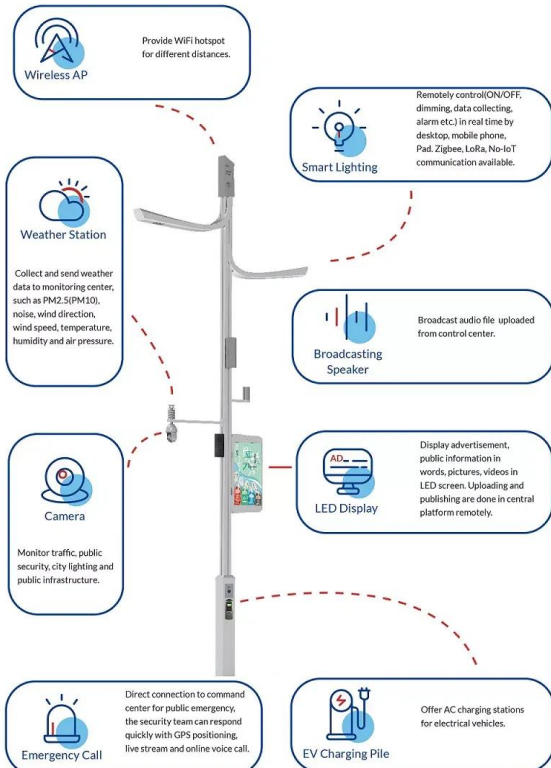
ELMNTX's IoT based Streetlight Automation Solutions

Smart street lighting, we work with city managers and lighting operators, and manufacturers
 In a world where lighting accounts for more than 19% of the global power consumption, smart street lighting reduces energy consumption and CO2 emissions by up to 40%, saving millions for communities everywhere.



Advantages of the Proposed System

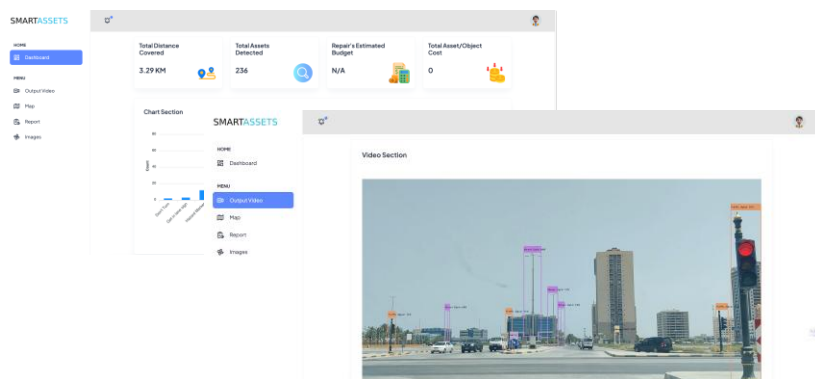
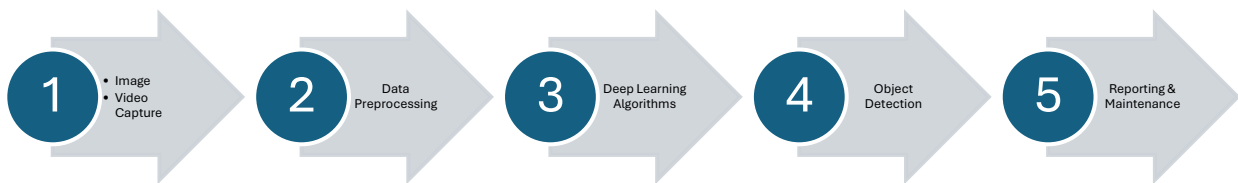
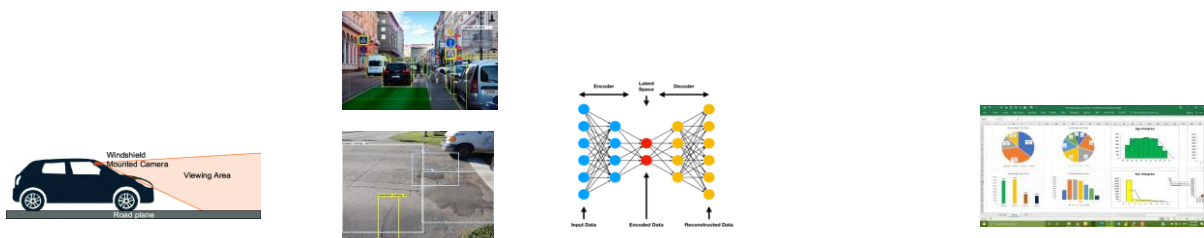
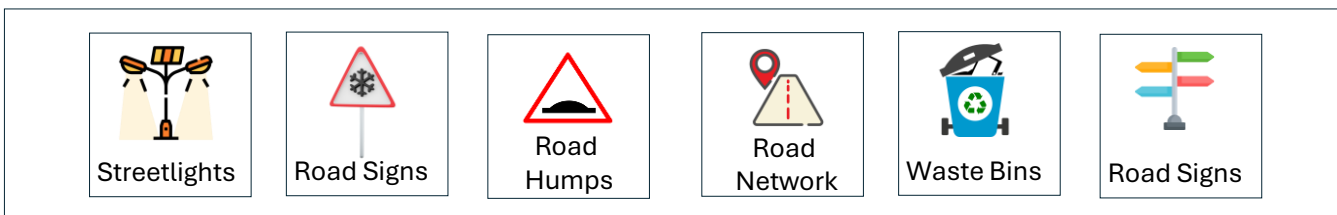
- Automatic switching of streetlights
- Maintenance cost reduction
- Reduction in CO₂ emission
- Reduction of light pollution
- Wireless communication
- Energy saving
- Reduction of manpower



ELMNTX – Road Condition Assessment & Asset Tagging

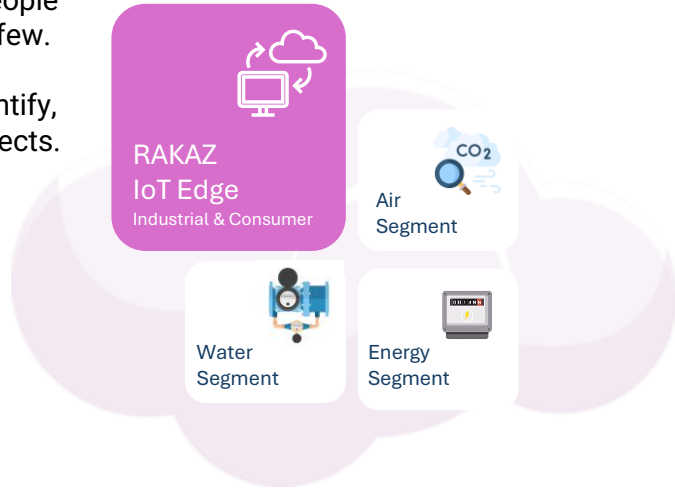
A fully integrated platform for the Road Condition Assessment, Asset classification, Geo Tagging, and analytics.

- Linear Detections
 - Signboards.
 - Gantry Signboards.
 - Roadside assets
- Non-Linear Detections
 - Identification of Potholes
 - Identification of Cracks.



ELMNTX – Video Surveillance and Analytics

In the world of security, video analytics turns surveillance into more than just recorded data. These top-end video analytics can provide valuable insight on your property – like consumer behaviour's, people counting, and daily scorecards – just to name a few. Generative AI and Deep learning models can be trained with a high video footage capacity to identify, classify, tag automatically, and label specific objects.



License Plate Recognition (ANPR)

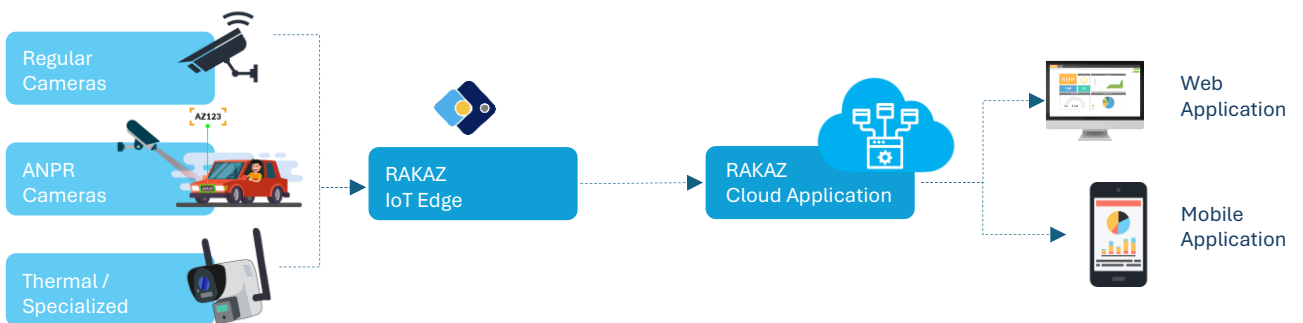
Face Recognition System

Crowd Behaviour Analytical System

Outdoor Vehicle / People Tracking Counting

Site Monitoring Asset – Motion detection analytics

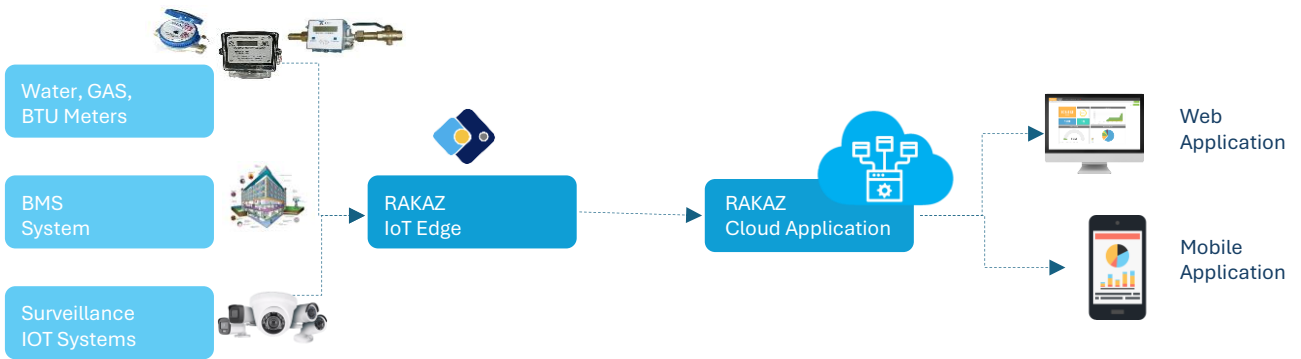
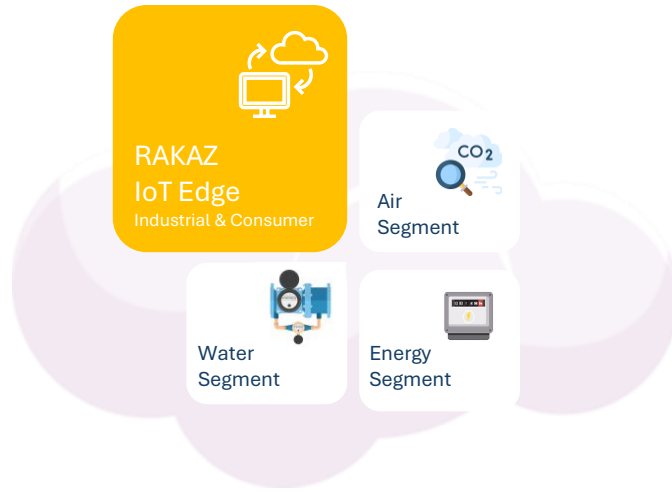
Traffic / Toll Management System



ELMNTX – Building Automation & CAFM

A fully web-based, IoT-enabled Facilities Management (FM) platform with 360° integration across core operational modules and real-time building systems monitoring. The solution digitizes FM operations while seamlessly connecting:

- **Live Building Intelligence**
Unified view of BMS, IoT sensors, and meters.
- **Proactive Maintenance**
Fix issues before they cause downtime.
- **Energy & Cost Savings**
Optimize HVAC, lighting, and water use.
- **Automated Compliance**
Streamline audits with digital records
- **Scalable Integration**
APIs for ERP, BIM, SCADA, and smart city systems.



Smart Asset & IoT Integration

- **BMS (Building Automation System)**
- **IoT Gateway & Sensor Networks**
- **Energy & Utility Metering** – Automatic data collection from **BTU meters, water meters, and submeters**
- **Predictive Maintenance**

Enhanced PPM with IoT Data

- **Corrective & Preventive Maintenance**
- **Condition-Based Maintenance**
- **Warranty & Lifecycle Tracking** – Automated alerts for expiring warranties.
- **Spare Parts Inventory Sync**

Integrated Help Desk & Automation

- **AI-Powered Alerts** – Auto-create tickets from BMS alarms or sensor thresholds.
- **Mobile Technician Dispatch** – Assign tasks with real-time equipment diagnostics.
- **Customer Self-Service Portal**

Energy & Sustainability Management

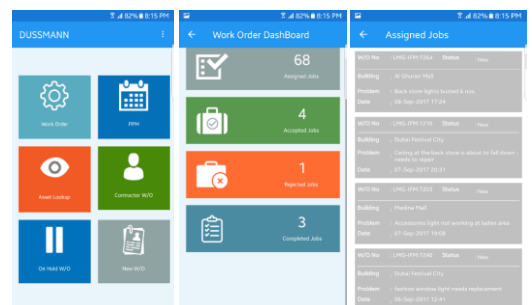
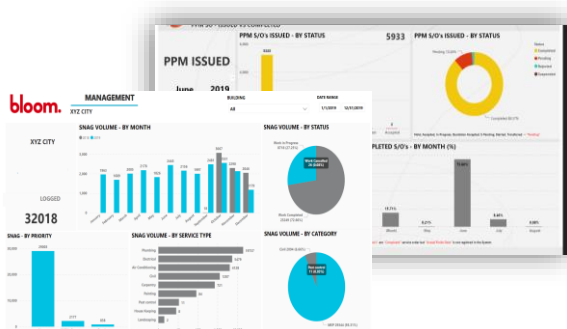
- **Real-time Energy Consumption Dashboards**
- **Automatic Demand Response** – e.g., Lighting based on occupancy
- **Leak & Anomaly Detection**
- **Renewable Energy Optimization**

Compliance & HSEQ Enhancements

- **Indoor Air Quality (IAQ) Monitoring**
- **Automated Safety Shutdowns** – Emergency protocols triggered by gas leaks or fire sensors.
- **Regulatory Reporting** – Auto-generate EPA, ISO 50001, or LEED compliance docs.

Budget & Cost Tracking with Smart Data

- **Utility Spend Analytics**
- **ROI Calculators** – Measure savings from efficiency upgrades (e.g., LED lighting).
- **Carbon Tax & ESG Reporting** – Track emissions for sustainability disclosures.



axELMNTX

reachus@elmntx.com

(971) 585 69 89 77

Dubai | Ras Al Khaimah | Sharjah | Bengaluru | Hyderabad | Qatar | Netherlands



@theelmntx
@elmntx-innovations

UK ♦ INDIA ♦ UAE ♦ APAC